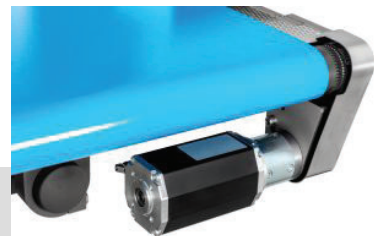


# Weighing belt series NPSR NPHL NPBR

*Technical Information*

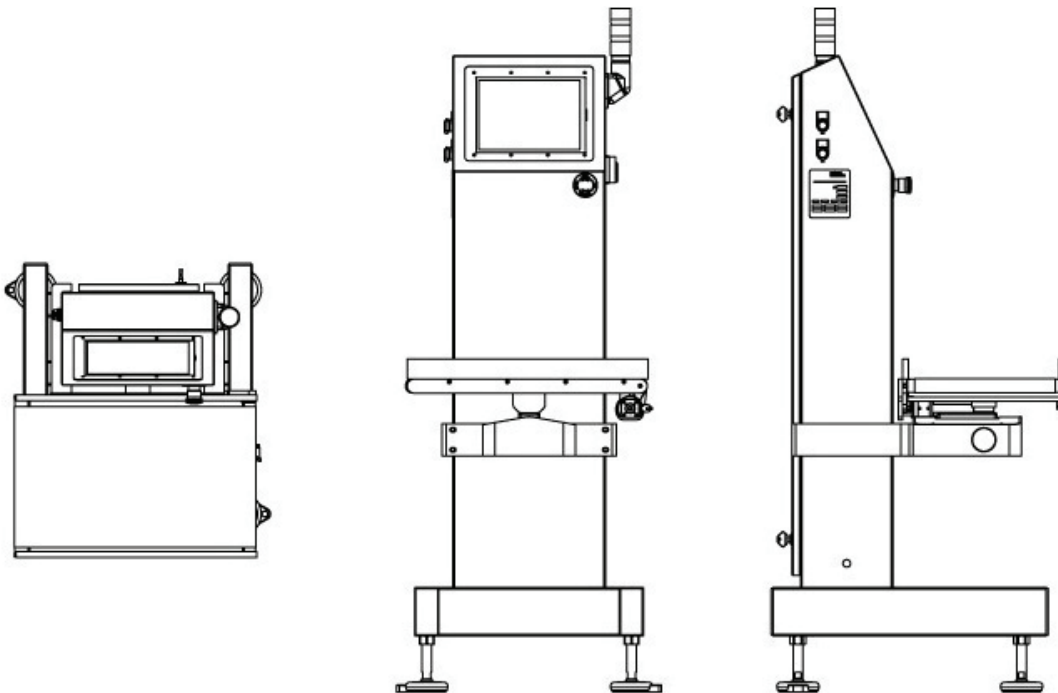


## **Transport modules with continuous weighing for high speeds and high precision**

Detection in continuous of the weight for bulk products in strict working environment. Shall monitor production processes. Track the processes in the transformation lines. Weight detection through single or multi load cells systems. Advanced electronics with a large 12" touch-screen (external or internal to machine block). Total supervision and interaction with the company systems with Communicator (Industry 4.0), Profinet or Ethernet IP. Remote assistance and remote display available.

## TECHNICAL FEATURES

- **Control panel:** colour touch-screen 12", external or internal mounting
- **Electronic Data processing:** RISC Embedded FPGA
- **Self-learning System and Calibration:** Included
- **Data Collection Software:** Included through Ethernet and USB
- **Kit for Remote Assistance:** Included
- **Compliance Industry 4.0 requirements:** compliant to Communicator
- **Connections to enterprise systems:** ProfiNet and Ethernet IP protocol
- **Conformity:** CE, HACCP
- **Belt speed:** up to 90 m/min
- **Conveyor length:** from 300 to 700 mm
- **Conveyor width:** from 140 to 350 mm
- **Display Division:** from 0,5 to 5 g
- **Protection degree:** IP65
- **Motorization:** Brushless with planetary gearboxes
- **Structure:** Stainless Steel AISI304
- **Voltage and Power absorption:** 110/230V AC 50/60Hz, L, N, PE - 500W



---

# DE KONINGH

 **CODING & LABELING**

Geograaf 8 | 6921 EW Duiven | T: +31 (0)26 741 00 00 | [info@dekonigh.nl](mailto:info@dekonigh.nl) | [www.dekonigh.nl](http://www.dekonigh.nl)