

# WHY

## PHYSICAL CONTAMINATION DETECTION (X-RAY BASE)

### INNOVATIVE TECHNOLOGY

- PHYSICAL CONTAMINATION DETECTION [even in the presence of packaging in metalized poly laminate, tinplate, aluminum and metal clips]
- COMPACT AND RELIABLE TECHNICAL CONFIGURATION
- SOFTWARE AND SENSORS DEVELOPED IN-HOUSE

### ADVANTAGES COMPARED TO METAL DETECTOR

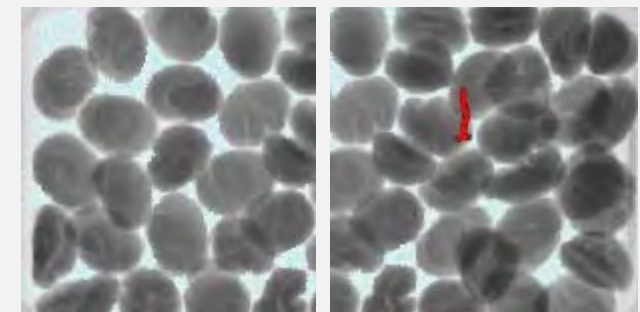
- NO PRODUCT EFFECT
  - IT DOES NOT LOSE EFFECTIVENESS WHEN THE TEMPERATURE OR HUMIDITY OF THE PRODUCT CHANGES;
  - IS NOT AFFECTED BY DISTURBANCES OR PARTICULAR ENVIRONMENTAL CONDITIONS, SUCH AS ELECTROMAGNETIC FIELDS.
- GREATER SENSITIVITY DURING INSPECTION
- MORE STABILITY AND REPEATABILITY OF PERFORMANCE
- ELIMINATE DANGEROUS AND EXPENSIVE FALSE REJECTS

### FOOD QUALITY AND SAFETY [PROTECTION AND EFFICIENCY]

- 100% OF PRODUCTION INSPECTED AND PROTECTED IN REAL-TIME
- ALLOWS YOU TO MEET THE REQUIREMENTS IN TERMS OF FOOD SAFETY AND QUALITY CONTROL FOR THE PURPOSES OF REGULATORY COMPLIANCE
  - BY CERTIFYING THEIR USE, THE TESTS REALIZED, AND THE PRODUCTS DETECTED
- TRACEABILITY OF REJECTED PRODUCT
  - POSSIBILITY, THROUGH THE DATABASE OF IMAGES OF DISCARDED PRODUCTS, TO TRACE THE CONTAMINANT AND ITS POSITION INSIDE THE PACKAGE.
- PROTECTS THE FINAL CUSTOMER
  - BY OFFERING THE BEST COVERAGE ON THE DETECTION OF DANGEROUS POLLUTANTS
- PROTECTS THE REPUTATION OF THE BRAND
- AVOID COMPLAINTS AND RETURNS FROM THE MARKET

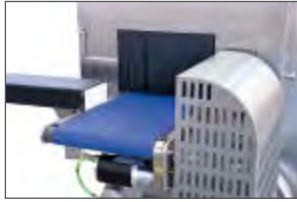
# DE KONINGH

 CODING · LABELING · INSPECTION



# PHYSICAL CONTAMINATION DETECTION (X-RAY BASE)

EJECTION SYSTEMS:  
PNEUMATIC CYLINDER  
EJECTOR, AIR BLAST, FLAP



EASY OPENING DOORS –  
TOTAL ACCESS TO THE  
INSPECTION AREA



## ADVANTAGES

### COMPACT AND DURABLE STRUCTURE

- Hygienic design
- Larger access to the inspection area
- Reduction of spare parts components
  - Reduction of maintenance costs

### MAXIMUM FLEXIBILITY

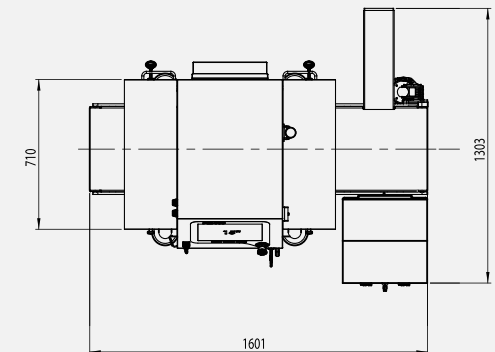
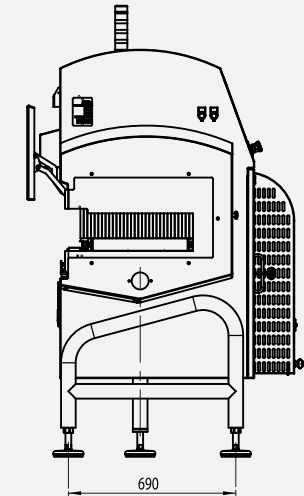
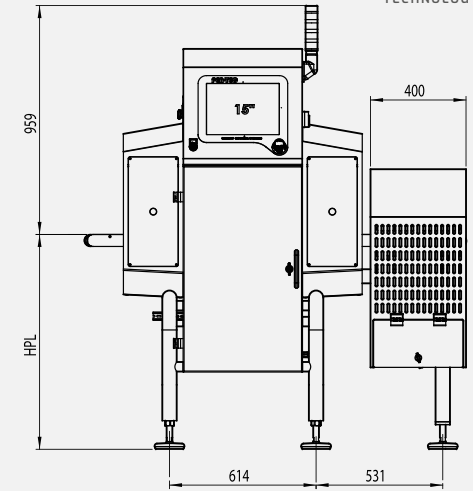
- Many configurations available to inspect different kinds of products and containers
- Bulk Product • Bottled Product • Packed Product

### DATA COLLECTION

- Accessibility to a database of images of discarded products
- Possibility to trace the contaminant and its position inside the package

### EASINESS OF USE

- Intuitive and user friendly
- In-house software for customize setup
- Interconnection with protocol
- Production report



## INSPECTIONS

- Metal
- Glass
- High Density plastic
- Stones
- Bones

## MARKET



## FEATURES

- Compact design
- Oriented to the directives of Hygienic design
- Expandable and upgradeable
- Management of rejection systems
- Complies with Industry 4.0 directives
- 15" color touch-screen panel
- Custom electronics developed internally
- Dedicated software with self-learning function
- High speed custom sensor
- Interconnection with external systems